



2R Series

Residential Regulator

The 2R regulator is designed for residential and light commercial applications. Its two-stage design makes it specially suitable for medium pressure service lines where it accommodates large inlet pressure variations while keeping very constant outlet.

It offers two body connection styles providing flexibility for meter mounting or integration in compact meter boxes.

KEY FEATURES

- » Increased safety
- » Easy installation
- » Compact design
- » Adjustable on site
- » Very large size filter

DESCRIPTION

The 2R regulator is a two-stage with internal relief and safety shut-off device. It is fitted with an inlet strainer.

The first stage unit reduces the inlet pressure to a near-constant intermediate pressure, while the second stage unit in row reduces the intermediate pressure to the adjustable set pressure.

The safety shut-off valve cuts the gas flow when the outlet pressure exceeds the set pressure (OPSO); it remains closed until the valve is manually reset.

The excess flow cut-off valve closes when the flow exceeds a set value, or the outlet pressure drops below a set value (under-pressure shut-off), or the inlet pressure drops; trigger points are factory set. A push-button allows re-starting the regulator after a flow cut-off.

The internal relief valve (SRV) avoids triggering the safety shutoff valve in case of thermal expansion, transient surges of pressure or valve seat malfunction.

Technical Features

Maximum inlet pressure	5 bar
Outlet pressure	13 - 110 mbar
Accuracy & lock-up pressure (*)	AC5 / AC10 & SG10/ SG30
Operating temperature	-20°C to +60°C
Acceptable gases	Natural gas, propane, butane, air, nitrogen
Safety devices	Relief valve (optional) Over-pressure shut-off (OPSO) (optional) Excess flow cut-off (optional)

(*) complying with DIN 33822 and EN334

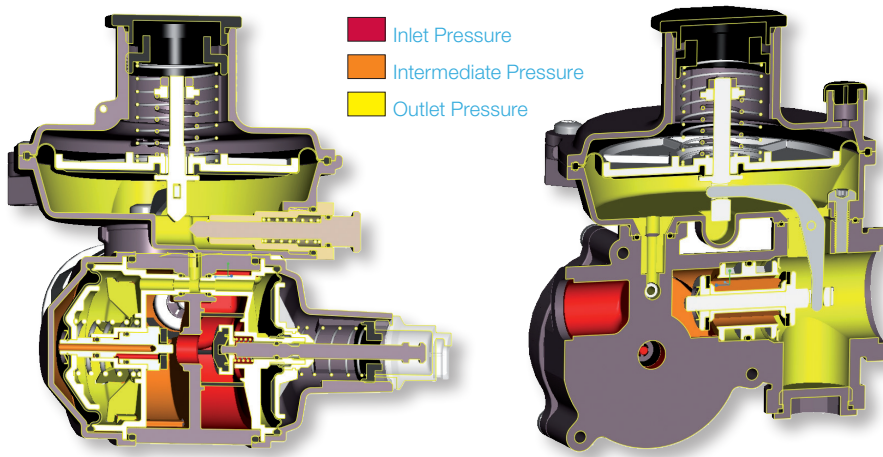
Sizes & Connections

Sizes	In-line G $\frac{1}{2}$ x G1 or angle G $\frac{1}{2}$ X G $\frac{3}{4}$
Connections	Threaded or with loose nuts, various sizes on request

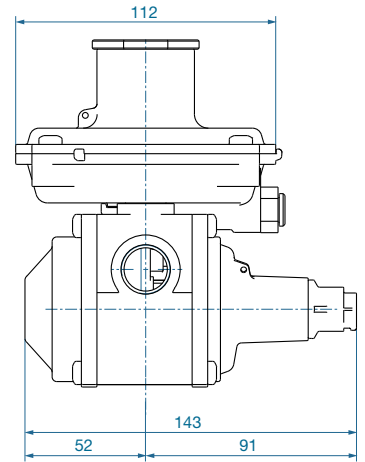
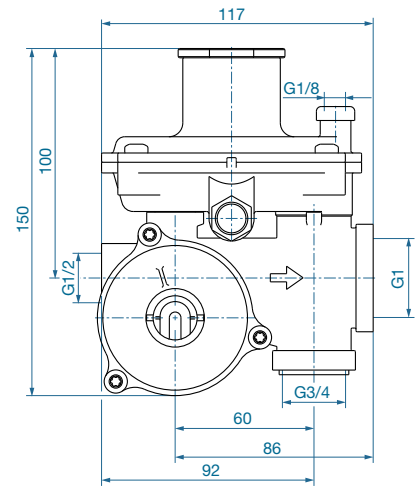
Materials

Body/Actuator	Die-cast aluminium
Seals	Nitrile
Diaphragms	Nitrile

Operational schematic



Dimensions



CONSTRUCTION

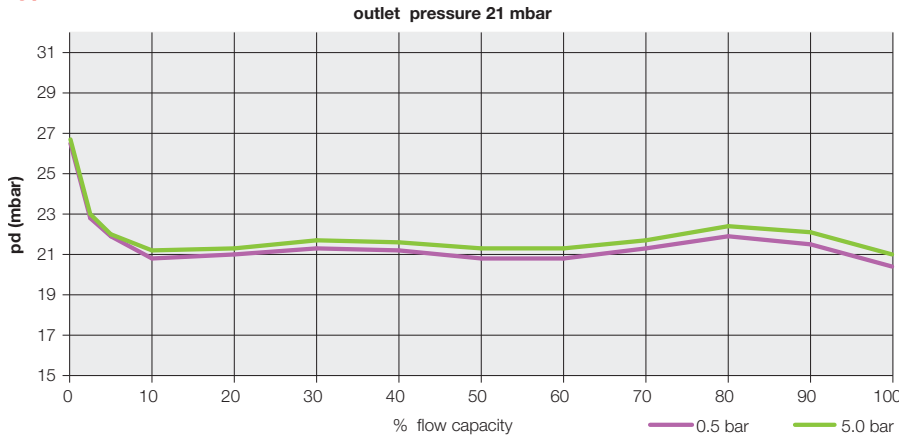
The 2R regulator meets the requirements of PED 97/23/CE article 3.3

Flow Capacity

Model	Inlet pressure	Capacity in m ³ /h
2R6	Pd+0.5 bar min	6m ³ /h
2R10	Pd+0.5 bar min	10m ³ /h
2R25	Pd+0.5 bar min	25m ³ /h

For Natural Gas (d = 0.6 m³) at Standard Conditions

Typical Performance Curve



Shipping Weight

1 per box (180 x 145 x 160 mm³) 1.3 kg



Our company is the world's leading provider of smart metering, data collection and utility software systems, with over 8,000 utilities worldwide relying on our technology to optimize the delivery and use of energy and water.

To realize your smarter energy and water future, start here: www.itron.com

For more information, contact your local sales representative or agency:

ITRON GmbH

Hardeckstraße 2
D-76185 Karlsruhe
Germany

Phone: +49 (0) 721 5981 0

Fax: +49 (0) 721 5981 189